



# Roxtec CF 8/32-genomföring

Genomföring med aluminiumram, för hög kabeldensitet.

Kabelgenomföringarna Roxtec CF 8 och CF 32 har ramar av gjuten aluminium och tätningsmoduler som kan anpassas till en mängd olika kabelstorlekar.



- Gnagarresistent
- Låg vikt
- Utrymmeseffektiv
- Möjliggör användning av förterminerade kablar

## Produktegenskaper



IP/UL NEMA

## Konstruktion för installation



Skåp & kapslingar

## Monteringsätt



Bultning

## Klassningar & certifikat

### Täthet

- IP 66/67, UL/NEMA 4,4X,12,13

## Ramdimensioner

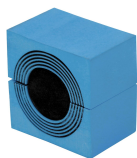
mm/kg

Ramvarianterna nedan är ett begränsat urval. Du hittar hela utbudet av ramar och konfigurationer på [roxtec.com](https://www.roxtec.com).

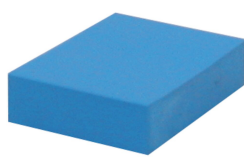
Titel	Ramöppningar	Packningsutrymme	Ytermått WxHxD	Öppningens mått w x h	Vikt	Art. nr
CF 8	1	40 x 80	75 x 140 x 60	61(+0.5/-0.5) x 127(+0.5/-0.5)	0.6	CSF0000080035
CF 32	2	40 x 160	130 x 230 x 60	110(+0.5/-0.5) x 216(+0.5/-0.5)	1.4	CSF0000320035

## Information om tätningskomponenter

### Tätningsskomponenter



CM-modul med Multidiameter™



CM solid kompensationsmodul



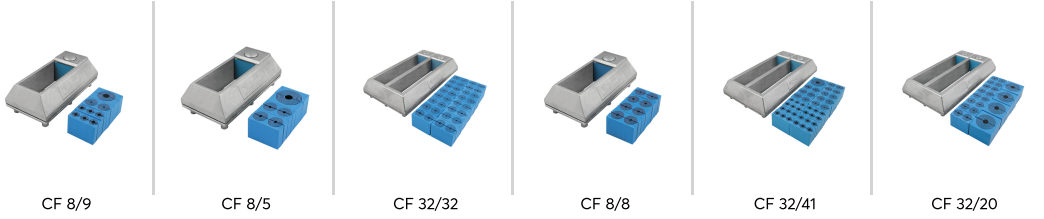
smörjmedel

Detaljerad information finns på [roxtec.com](https://www.roxtec.com).



# Förkonfigurerade genomföringskit

mm/kg



Titel	Konfigurering	Ytermått WxHxD	Öppningens mått w x h	Vikt	Art. nr
CF 8/9	2x (3.5-16.5), 1x (10.0-25.0), 6x (3.5-10.5)	75 x 140 x 59	61(+0.5/-0.5) x 127(+0.5/-0.5)	0.8	CKT0000000009
CF 8/5	1x (9.5-32.5), 4x (3.5-16.5)	75 x 140 x 59	61(+0.5/-0.5) x 127(+0.5/-0.5)	0.8	CKT8000000005
CF 32/32	32x (3.5-16.5)	130 x 230 x 59	110(+0.5/-0.5) x 216(+0.5/-0.5)	2	CKT3200000032
CF 8/8	8x (3.5-16.5)	75 x 140 x 59	61(+0.5/-0.5) x 127(+0.5/-0.5)	0.8	CKT8000000008
CF 32/41	1x (9.5-32.5), 24x (3.5-10.5), 16x (3.5-16.5)	130 x 230 x 59	110(+0.5/-0.5) x 216(+0.5/-0.5)	2	CKT3200000041
CF 32/20	4x (9.5-32.5), 16x (3.5-16.5)	130 x 230 x 59	110(+0.5/-0.5) x 216(+0.5/-0.5)	2	CKT3200000020

The product information provided by Roxtec does not release the purchaser of the Roxtec system, or part thereof, from the obligation to independently determine the suitability of the products for the intended process, installation and/or use. Roxtec gives no guarantee for the Roxtec system or any part thereof and assumes no liability for any loss or damage whatsoever, whether direct, indirect, consequential, loss of profit or otherwise, occurred or caused by the Roxtec systems or installations containing components not manufactured by an authorized manufacturer and/or occurred or caused by the use of the Roxtec system in a manner or for an application other than for which the Roxtec system was designed or intended. Roxtec expressly excludes any implied warranties of merchantability and fitness for a particular purpose and all other express or implied representations and warranties provided by statute or common law. User determines suitability of the Roxtec system for intended use and assumes all risk and liability in connection therewith. In no event shall Roxtec be liable for indirect, consequential, punitive, special, exemplary or incidental damages or losses. The Roxtec products are offered and sold in accordance with the conditions of the Roxtec General Terms of Sales. The latest version of the Roxtec General Terms of Sales can be downloaded from <https://www.roxtec.com/en/about-us/about-roxtec/general-terms-of-sales/>. We reserve the right to make changes to the product and technical information without further notice. Any errors in print or entry are no claims for indemnity. The content of this publication is the property of Roxtec International AB and is protected by copyright. This document was generated on: 2024-04-23